

roller blinds

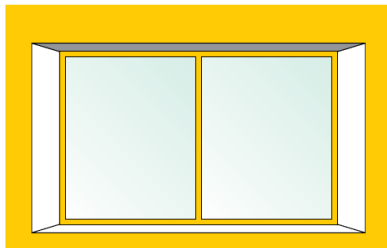
fitting instructions

HOW TO FIT MY BLIND

A roller blind bracket allows you to either TOP FIX or FACE FIX.

If you have protruding window handles you will need to top fix as the bracket will not have any allowance to avoid them. You can face fix if your handles are flush with the frame or you are fixing outside the recess.

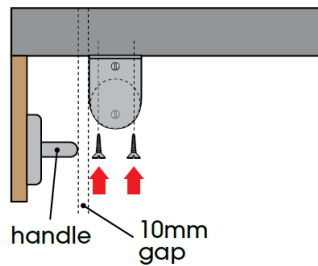
The roller blind has a specific bracket for each side of the blind the control bracket and the pin bracket and obviously you need to have the control bracket fixed at the same side and the controls on the blind.



■ top fix ■ face fix

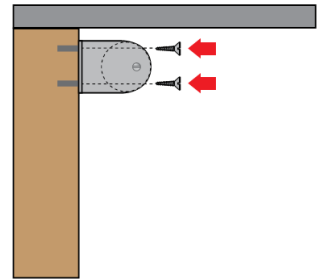
top fixing

Take a measurement of how far your window handles protrude from your window frame (mm) then add 10mm to that measurement, this is the distance from the window frame to the back of your bracket you will need to mark this to avoid the fabric catching your window handles. Your brackets should be fixed only a few millimetres in from the side of the recess, you can check this position by attaching the bracket to the blind and holding it in the position you will be fixing the blind.



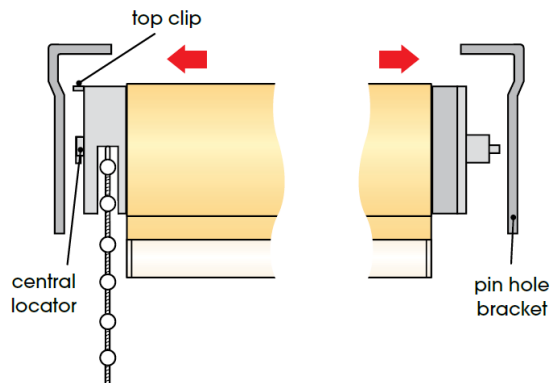
face fixing

When recess fitting fix your brackets only a few millimetres in from the side of the recess and into the wall or window frame as closely as possible to the ceiling or lintel, for exact blinds fix the brackets in the exact place above the recess that you took your original measurement from. You can check both these positions by attaching the bracket to the blind and holding it in the position you will be fixing the blind.



fitting the blind

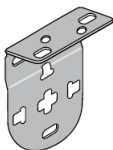
Make sure you have the specific roller blind ends lined up with the correct bracket. On the control side have the chain cap level so that the chain is showing equally at each side, then secure the top locator into the top slot and then the central locator. Once the control side is fixed push in the pin side and ease it into the pin hole bracket until it clicks.



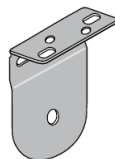
WARNING: IN THE INTEREST OF SAFETY, PLEASE KEEP ALL PULL CORDS AND CHAINS OUT OF THE REACH OF CHILDREN. MOVE COTS, BEDS AND OTHER FURNITURE AWAY FROM BLINDS AND INSTALL SAFETY DEVICES SUCH AS CLEATS AND CORD TIDIES TO LIMIT ACCESS TO CORDS.

fittings

bracket (control side)



bracket (pin hole)



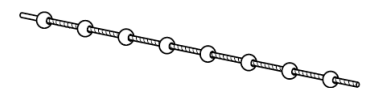
screws



rawlplugs



pull cord



FIXINGS NOT INCLUDED: USE CORRECT SCREWS & RAWL PLUGS FOR WALL TYPE!



make it safe